

# Polk County Power 'The Livewire'



  
Your Touchstone Energy® Partner

PO Box 465 Stromsburg NE 68666

July 2018

## CROP SPRAYING/PESTICIDE APPLICATION SAFETY ALERT

### Nebraska Department of Agriculture Pesticide Program Worker Protection

Federal laws and regulations have been adopted to help protect the public, the environment, pesticide handlers, and agricultural workers from possible adverse effects caused by pesticide use.

All pesticides labeled for agricultural use are subject to the Worker Protection Standard (WPS). Under the WPS, workers who may enter a treated site are to be protected by being notified of the product's Restricted Entry Interval (REI). Restricted Entry Interval Level means "the time after the end of a pesticide application during which entry into the treated area is restricted". *Continued on Page 3*

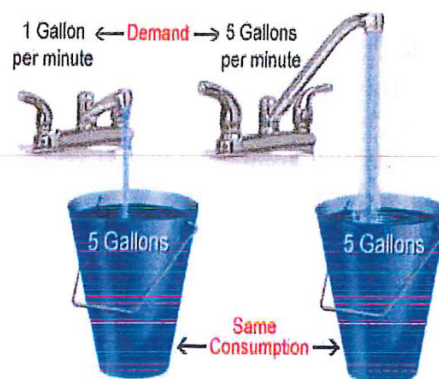
## Understanding how Demand Affects Your Bill

Demand is the amount of power needed to supply every electrical device running in your home or business at a specific point in time. It is the maximum rate at which your household consumes electricity.

### Why bill Demand?

Polk County Rural Public Power District's wholesale rates are based on total demand utilized by our customers in one month. Some customers create a larger demand than others when more appliances or farming equipment are used simultaneously.

The illustration gives us an idea of how electrical demand works. The same amount of water is required, but it takes a larger faucet to do the job in the same amount of time. Much like electrical demand, the more power utilized at a given time may require a larger transformer.



Automated meters will record the highest demand in each billing period and urban customers are billed for their peak demand. Many rural customers have grain drying and other farm equipment which creates a larger demand.

Typically, an all electric home's demand will increase during the heating season ultimately increasing demand.

Transformers are appropriately sized for this customer group to avoid transformer overload, voltage fluctuation and possible loss of equipment. The transformer must be sized large enough to accommodate the entire home and farm load use at a given time.

Polk County RPPD has a three-part bill: a demand charge, energy charge (kilowatt-hours consumed) and a customer charge.

The District upgraded customers' electric meters to an advanced metering system a few years ago. Advanced metering allows the District to monitor an individual customer's load, show line blinks, monitor line voltage, and analyze substation equipment.

Advanced metering is a great tool for troubleshooting not only for the District, but for customer's as well.



### What do the lights mean?

On the load control device, the second light from the left (red) indicates you are being controlled. There are other lights on the device but they indicate power and signal.



### Load Management Basics

June 1 - Sept 15  
Daily from 9:00 AM - 11:00 PM  
Maximum 12 hour daily control Mon-Sat  
Sunday 6 hour maximum control

Daily control hours posted by 8:30 AM  
on [www.pcrppd.com](http://www.pcrppd.com)  
or by calling 1-800-239-9590.



### Text/Email Messages

We can notify you of the daily control hours and early releases. Simply call the office and we'll get you signed up!  
402-764-4381

# Everything You Need To Know



## About PCRPPD Load Management



### Repairs/Maintenance

Please plan your anticipated repairs and maintenance for your regular scheduled control days. We will do our best to assist with unexpected repairs requiring control release, however, this may not always be possible.



### Control Days

Customers may reduce the number of control days anytime during the summer season. A \$60 fee will be charged along with additional horsepower charges.



### Bypassing Devices

Customers may not bypass load management devices for any reason. Customers are responsible for notifying PCRPPD prior to any repairs that require the load management device to be bypassed. Failure to do so may result in a \$250 fine and removal from load management rate.

# Oh This July Heat!

Remember last winter when there was snow on the ground and the temperature was frigid? Everyone was wishing for summer and hot weather. Well folks, it's here! Hot summer days where you can break a sweat just thinking about mowing the lawn.

When outside temperatures are very high, the danger for a heat-related illness rises. People's bodies are not able to cool themselves quickly enough, and they overheat if the right precautions are not taken. Since most heat-related illnesses are preventable, the Centers for Disease Control, and the American Red Cross offer these tips to help you stay cool and healthy while enjoying summer:

1. Hydrate! Don't wait until you're thirsty to get a drink. Drink plenty of water before, during and after physical activity to avoid dehydration. Avoid drinking alcohol or drinks that contain lots of sugar.
2. Dress for the heat: wear lightweight, light colored clothing; choose light, breathable fabrics such as cotton. A wide brimmed hat and sunglasses can offer extra protection for your face and eyes.
3. Apply water-resistant sunscreen with at least SPF 15 every two hours, every time you are outdoors.
4. Limit activity, such as exercise, to early morning and evening. Avoid intense activities between noon and 3 p.m. when the sun is at its strongest. If you do exercise, drink two to four glasses of fluids per hour. When the heat gets unbearable, try indoor activities.
5. Eat small meals and avoid high protein foods, which increase metabolic heat.
6. If outside, try to rest often in shady areas.

Warning signs of heat illness are not the same in everyone; if you or someone you know has any symptoms of heat-related illness, seek medical care immediately. Symptoms can include muscle cramps, headaches, nausea or vomiting. Other signs could be heavy sweating, feeling weak, skin that is cold, pale or clammy, or a fast or a weak pulse.

Remember, an ounce of prevention can help you avoid heat related illness. Take precautions to keep yourself or anyone you know out of harm's way when temperatures and humidity rise to extreme levels.

## Pesticide Application Continued from Page 1

Prior to application the pesticide applicator is required to post notification at the field and/or notify the landowner of the specifics of application: when, where, quantity applied, REI, etc.



All aerial spraying with chemicals creates a potential hazard of dermal or inhalation exposure to utility workers and farm mechanics that are called out to work on an irrigation well or electric lines. Quick building storms, load management maintenance, and outages may cause utility workers to need access to fields that may have been treated. Typically, utility workers have no prior knowledge of chemical applications recently applied.

Also, if you have contractors or employees who do not speak English coming and going from fields, please post appropriate signage to protect all workers.

In Nebraska, injuries have occurred to people who enter a sprayed field before it was safe. Humid conditions have factored into this and should be considered by those needing to follow Restrict Entry Intervals.

Once a pesticide is applied the area treated should include the following information: name of pesticide, application date, safe entry date, name of applicator and contact phone number.

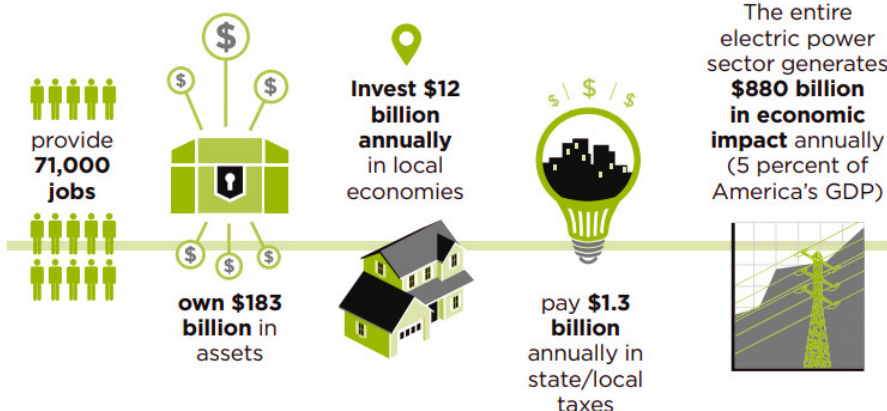
In an attempt to alert our linemen of hazards, we would ask that if spraying has taken place on your fields, please give us a call (402) 764-4381 to let us know. It not only ensures the safety of our employees, it may expedite the time of our service calls.

**"Our linemen will not enter a field that shows any evidence or indication of being sprayed, if we have not been notified or have no knowledge of the chemical applied. Service will not be restored until the Restricted Entry Interval amount of time has lapsed."**  
Randy Reese, Operations Manager



NRECA and Touchstone Energy working partners with Nebraska's Public Power Districts and Cooperatives nationwide.

### Electric cooperatives are economic engines in their communities





# EnergyWise™ Offers a \$30 Incentive for Cooling System Tune Up

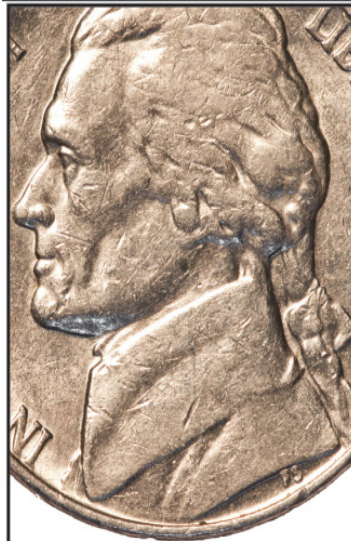
When was the last time you had your home's cooling system tune up?

If it has been a few years, now is the time to have your heating and cooling contractor inspect, service, and clean the equipment. Typically tune-ups on cooling systems that have been neglected for a few years can provide 5-15% energy savings or more. Not to mention the unit can better perform from a comfort and equipment longevity stand point.

Fortunately there is a \$30 EnergyWise™ incentive available to customers who have their cooling system tuned-up, regardless of the type or age of the cooling system.

Even though the cooling system may be serviced or tuned-up frequently, the customer is only eligible for the EnergyWise™ \$30 incentive a minimum of every three years.

Be proactive! Don't wait until summer temperatures soar and humidity is high. When your system is being over worked is most likely the time it could go down leaving you miserably uncomfortable.



## AFFORDABILITY

At a time when prices on everything seem to be climbing, public power remains a great value. In fact, since 1936 electric rates in Nebraska have only gone up five cents per kilowatt hour. Just one nickel's change since the Great Depression and the beginning of the Rural Electrification Program which brought electricity to some of Nebraska's most rural farms. Nebraska's rural electric systems truly are working for you.



Working for  
Nebraska

[www.workingfornebraska.org](http://www.workingfornebraska.org)

**Lightening** strikes the United States millions of times each year, and every strike is a potential killer. To keep your family safe, it is important to know what actions to take during a thunderstorm. Molly Hall, executive director of the Safe Electricity program warns, "There is no safe place from lightning when you are outside. To be as safe as possible you must seek shelter indoors or in an enclosed metal topped vehicle when there is a thunderstorm in the area."

A safe indoor shelter is defined as a substantial building with a full roof, walls, and a floor. Unsafe structures include covered patios, open garages, picnic shelters, and tents. A safe vehicle is one that is fully enclosed like a hard-topped car, minivan, truck, etc. Unsafe vehicles include convertibles, motorcycles, golf carts, and any open cab vehicle.



## Know What's Below. Call Before You Dig!

*It's all about...*

*And it's a law...*



Polk County RPPD News  
115 W 3rd St.  
Stromsburg NE 68666-0465  
Phone 402/764-4381

### Board of Directors

Mardell H. Johnson - President  
Vernon A. Kuhnel - Vice President  
Gary Allison - Treasurer  
James D. Carlson - Director  
Gene Urkoski - Director  
Robert Lindburg - Director  
Greg Kuhnel - Director  
James Papik - Attorney/Secretary  
Phil Burke - General Manager

### Meetings

In accordance with Nebraska Statute, notice is hereby given that the regular meetings of the Board of Directors of Polk County Rural Public Power District are held on the 8th day of each month, commencing at 8:30 A.M. at the district office located at 115 W 3rd St., Stromsburg Nebraska. In the event that the 8th falls on a Saturday, the meeting will be held on Friday the 7th. If the 8th falls on a Sunday or observed holiday, the meeting will be held the following business day. The meeting date shall be set by the Board of Directors and published in the Legal Notices of local newspaper. An agenda for each regular meeting of the board is available for public inspection during business hours at least three (3) days prior to each meeting; provided however, that the Board of Directors shall have the right to modify the agenda to include any type of emergency item.

### Office Hours

8:00 A.M to 5:00 P.M.  
[www.pcrppd.com](http://www.pcrppd.com)

Through SmartHub™ you can register for recurring payments, make payments, monitor usage, review past payments, billing history and more.

You can also make mobile payments using Interactive Voice Response (IVR). You can simply enter the number #844/859-5977 in your phone contacts and make payments at any time. You can safely store payment methods and follow the prompts to complete payment.

Watch for updates and posts on our Facebook page.

**"Owned by those we serve"**